

Final Thickness Measurement Report

CMA CG

Project Example



Table of content

General information	3
Measurements summary	5
Diminutions summary	7
Side shell plating	12
Bilge plating	15
Bottom shell plating	17
Hopper tank	20
Main deck	22
Transverse: Amidship	28
Transverse: Transverse loc. 1	30
Transverse: Transverse loc. 2 - Transverse loc. 3	31
Longitudinal: Centre strake	33
Longitudinal: Sheer strake	34
Longitudinal: 1st below sheer strake - 2nd below sheer strake	37
Room and space: Aftpeak	40
Room and space: Forepeak	42
Plan: Deck plating	44
Plan: Starboard shell plating	45
Plan: Port shell plating	46
Plan: Bottom shell palting	47
Plan: Transverse 1st FWD	48
Plan: Transverse amidship	49
Plan: Transverse 1st Aft	50
Caption of items gauged	51
Appendix	52

General information

Customer name: CMA CG
Customer Email: example@gmail.com
Customer address: 2 Victoria Street, Singapore
Ship name: Project Example
Ship type: Bulk carrier
Ship length: Less than 90m
IMO number: N/A
Port of registry: SINGAPORE
Gross tons: N/A
Deadweight: N/A
Date of build: 10 February 1998
Classification society: Bureau Veritas
Class identity number: N/A
Type of survey: Freeboard Survey
Inspection date: 2 March 2023
Place of measurement: SINGAPORE
Plans given: Yes
Drawing attached to the report: Yes
Measured on coating: Yes
Measured outside: Yes
Measured inside: Yes
Material: Carbon steel
Gauge: 38 DL PLUS - Olympus
Calibration date: 30 January 2024
Probe: D7906-SM - Olympus
Velocity: 6350 M/s
Coupling media: Gel
Time base: 50 mm
Gain: 65 dB

General information

Name of firm performing thickness measurement: UTM REPORTING

Thickness measurement firm certified by: Class society

Certification validity: 2028-06-29

Controller qualification: 1234

Terms & condition of report use:

Your legal clause

Controller name: Testerat Utmreporting

Inspector Name: THOMAS .D

Report reviewed for consistency, measurements partially attended

Signature:

Signature:

Measurements summary

Hull item	Sub hull item	Mean diminution (in %)		Number of measurements	
		Port	Starboard	Port	Starboard
Side shell plating	Side shell plating	7.18%	9.06%	35	37
Bilge plating	Bilge plating	9.64%	7.93%	14	15
Bottom shell plating	Bottom shell plating	5.47%	6.27%	34	34
Hopper tank	Side plating	2.92%	4.23%	13	13
Hopper tank	Bottom plating	5.34%	7.01%	17	17
Main deck	Plating A3	-	2%	0	2
Main deck	Plating A2	-	7.14%	0	7
Main deck	Plating A1	-	7.67%	0	3
Main deck	Plating B2	5%	7%	1	2
Main deck	Plating B1	5.5%	-1%	2	3
Main deck	Plating C1	5.75%	-	4	0
Main deck	Plating C2	6.38%	-	8	0
Main deck	Plating C3	9.5%	-	2	0

 Substantial diminution

 Excessive diminution

Measurements summary

Hull item	Sub hull item	Mean diminution (in %)		Number of measurements	
		Port	Starboard	Port	Starboard
Main deck	Plating C4	5%	-	4	0
Main deck	Plating C5	5.25%	-	4	0
Main deck	Plating C6	4.89%	-	9	0
Main deck	Plating A5	-	7.33%	0	3
Main deck	Plating A6	6%	5%	1	5
Main deck	Plating A4	4.25%	-	4	0
Main deck	Plating B3	5%	4.75%	3	4
Total				155	145

 Substantial diminution

 Excessive diminution

Diminutions summary

Port					Starboard				
ID	Hull item	Sub hull item	Mesurement	Diminution (in %)	ID	Hull item	Sub hull item	Mesurement	Diminution (in %)
137	Side shell plating	Side shell plating	8.4	16%	73	Side shell plating	Side shell plating	8.2	18%
138	Side shell plating	Side shell plating	8.5	15%	74	Side shell plating	Side shell plating	8.0	20%
					79	Side shell plating	Side shell plating	8.5	15%
					88	Side shell plating	Side shell plating	8.4	16%
					99	Side shell plating	Side shell plating	8.2	18%
					100	Side shell plating	Side shell plating	8.5	15%
					120	Side shell plating	Side shell plating	8.5	15%
					121	Side shell plating	Side shell plating	8.5	15%

 Substantial diminution

 Excessive diminution

Diminutions summary

Port				
ID	Hull item	Sub hull item	Mesurement	Diminution (in %)
129	Bilge plating	Bilge plating	8.5	15%
158	Bilge plating	Bilge plating	8.2	18%

 Substantial diminution

 Excessive diminution

Diminutions summary

Port					Starboard				
ID	Hull item	Sub hull item	Mesurement	Diminution (in %)	ID	Hull item	Sub hull item	Mesurement	Diminution (in %)
172	Bottom shell plating	Bottom shell plating	10.5	12.5%	175	Bottom shell plating	Bottom shell plating	9.8	18.33%
173	Bottom shell plating	Bottom shell plating	10.1	15.83%	176	Bottom shell plating	Bottom shell plating	10.6	11.67%
174	Bottom shell plating	Bottom shell plating	9.5	20.83%	209	Bottom shell plating	Bottom shell plating	10.8	10%
225	Bottom shell plating	Bottom shell plating	9.6	20%	226	Bottom shell plating	Bottom shell plating	9.9	17.5%
					227	Bottom shell plating	Bottom shell plating	10.0	16.67%

 Substantial diminution

 Excessive diminution

Diminutions summary

Port					Starboard				
ID	Hull item	Sub hull item	Mesurement	Diminution (in %)	ID	Hull item	Sub hull item	Mesurement	Diminution (in %)
258	Hopper tank	Bottom plating	11.2	6.67%	254	Hopper tank	Bottom plating	9.9	17.5%
259	Hopper tank	Bottom plating	10.7	10.83%	255	Hopper tank	Bottom plating	10.5	12.5%
260	Hopper tank	Bottom plating	11.2	6.67%	256	Hopper tank	Bottom plating	10.8	10%
272	Hopper tank	Bottom plating	10.9	9.17%	257	Hopper tank	Bottom plating	11	8.33%
273	Hopper tank	Bottom plating	11.4	5%	268	Hopper tank	Bottom plating	11.1	7.5%
292	Hopper tank	Bottom plating	10.9	9.17%	270	Hopper tank	Bottom plating	10.8	10%
293	Hopper tank	Bottom plating	10.7	10.83%	271	Hopper tank	Bottom plating	10.5	12.5%
294	Hopper tank	Bottom plating	10.8	10%	284	Hopper tank	Side plating	8.8	12%
					295	Hopper tank	Bottom plating	10.9	9.17%
					296	Hopper tank	Bottom plating	10.9	9.17%
					297	Hopper tank	Bottom plating	11.0	8.33%

 Substantial diminution

 Excessive diminution

Diminutions summary

Port					Starboard				
ID	Hull item	Sub hull item	Mesurement	Diminution (in %)	ID	Hull item	Sub hull item	Mesurement	Diminution (in %)
25	Main deck	Plating C2	8.7	13%	5	Main deck	Plating A2	8.8	12%
29	Main deck	Plating C3	9.0	10%	14	Main deck	Plating A1	8.8	12%
35	Main deck	Plating C6	9.0	10%					

 Substantial diminution

 Excessive diminution

Side shell plating

Sub hull item	Transverse Location	Longitudinal Location	Orig. thk mm	Max Dim mm	Aft										Forward									
					Port					Starboard					Port					Starboard				
					Space / Room	Id	TM mm	Diminution		Diminution		TM mm	Id	Space / Room	Space / Room	Id	TM mm	Diminution		Diminution		TM mm	Id	Space / Room
								mm	%	%	mm							mm	%	%	mm			
Side shell plating	3rd Aft	1st below sheer strake	10	1.5	-	123	9.8	0.2	2%	5%	0.5	9.5	71	-					5%	0.5	9.5	91	Aftpeak	
Side shell plating	3rd Aft	1st below sheer strake	10	1.5	-	164	9.5	0.5	5%	14%	1.4	8.6	72	-										
Side shell plating	3rd Aft	1st below sheer strake	10	1.5	Aftpeak	166	9.6	0.4	4%	4%	0.4	9.6	92	Aftpeak										
Side shell plating	3rd Aft	1st below sheer strake	10	1.5	Aftpeak	168	8.9	1.1	11%															
Side shell plating	3rd Aft	2nd below sheer strake	10	1.5	-	163	9.5	0.5	5%	4%	0.4	9.6	93	Aftpeak										
Side shell plating	3rd Aft	2nd below sheer strake	10	1.5	-	165	9.4	0.6	6%	4%	0.4	9.6	94	Aftpeak										
Side shell plating	3rd Aft	2nd below sheer strake	10	1.5	Aftpeak	167	9.4	0.6	6%	6%	0.6	9.4	95	-										
Side shell plating	3rd Aft	2nd below sheer strake	10	1.5	-	169	9.2	0.8	8%	4%	0.4	9.6	96	-										
Side shell plating	2nd Aft	1st below sheer strake	10	1.5	-	124	9.9	0.1	1%	18%	1.8	8.2	73	-										
Side shell plating	2nd Aft	1st below sheer strake	10	1.5	-	162	9.6	0.4	4%	20%	2	8.0	74	-										
Side shell plating	2nd Aft	1st below sheer strake	10	1.5						15%	1.5	8.5	79	-										
Side shell plating	2nd Aft	2nd below sheer strake	10	1.5	-	160	9.2	0.8	8%	12%	1.2	8.8	98	-										
Side shell plating	2nd Aft	2nd below sheer strake	10	1.5	-	161	9.7	0.3	3%	18%	1.8	8.2	99	-										
Side shell plating	2nd Aft	2nd below sheer strake	10	1.5						15%	1.5	8.5	100	-										

Substantial diminution

Excessive diminution

TM Repaired

Main deck

Sub hull item	Transverse Location	Longitudinal Location	Orig. thk	Max Dim	Port				Starboard				
					Space / Room	Id	Diminution		Diminution		TM	Id	Space / Room
			mm	mm			mm	%	%	mm			
Plating B1	Transverse loc. 3	Centre strake	10	1					-20%	-2	12	13	Forepeak

Substantial diminution

Excessive diminution

TM Repaired

Main deck

Sub hull item	Transverse Location	Longitudinal Location	Orig. thk mm	Max Dim mm	Aft										Forward									
					Port					Starboard					Port					Starboard				
					Space / Room	Id	TM mm	Diminution		Diminution		TM mm	Id	Space / Room	Space / Room	Id	TM mm	Diminution		Diminution		TM mm	Id	Space / Room
								mm	%	mm	%							mm	%	mm	%			
Plating A4	1st Aft	Sheer strake	10	1	-	40	9.5	0.5	5%															
Plating A4	1st Aft	Sheer strake	10	1	-	41	9.4	0.6	6%															
Plating A4	Transverse loc. 1	Sheer strake	10	1	-	69	9.7	0.3	3%															
Plating A4	Transverse loc. 1	Sheer strake	10	1	-	70	9.7	0.3	3%															
Plating B3	Transverse loc. 2	2nd strake inboard	10	1						5%	0.5	9.5	43	-										
Plating B3	Transverse loc. 2	Centre strake	10	1	-	45	9.4	0.6	6%	6%	0.6	9.4	44	-										
Plating B3	Transverse loc. 3	Centre strake	10	1	Aftpeak	50	9.3	0.7	7%	6%	0.6	9.4	51	Aftpeak										
Plating B3	Transverse loc. 3	Centre strake	10	1	Aftpeak	58	9.8	0.2	2%	2%	0.2	9.8	59	Aftpeak										

Substantial diminution

Excessive diminution

TM Repaired

Transverse: Amidship

Hull item	Sub hull item	Longitudinal Location	Orig. thk mm	Max Dim mm	Port					Starboard				
					Space / Room	Id	Diminution			Diminution		TM mm	Id	Space / Room
							mm	%	mm	%	mm			
Side shell plating	Side shell plating	1st below sheer strake	10	1.5	-	131	9.5	0.5	5%	4%	0.4	9.6	97	-
Side shell plating	Side shell plating	1st below sheer strake	10	1.5	-	153	9.2	0.8	8%	7%	0.7	9.3	108	-
Side shell plating	Side shell plating	2nd below sheer strake	10	1.5	-	151	9.1	0.9	9%	4%	0.4	9.6	103	-
Side shell plating	Side shell plating	2nd below sheer strake	10	1.5	-	152	9.1	0.9	9%	6%	0.6	9.4	107	-
Bilge plating	Bilge plating	2nd below sheer strake	10	1.5	-	129	8.5	1.5	15%	4%	0.4	9.6	104	-
Bilge plating	Bilge plating	2nd below sheer strake	10	1.5	-	150	8.9	1.1	11%	4%	0.4	9.6	105	-
Bottom shell plating	Bottom shell plating	3rd below sheer strake	12	1.2	-	180	12.0	0	0%	3.33%	0.4	11.6	211	-
Bottom shell plating	Bottom shell plating	3rd below sheer strake	12	1.2	-	219	11.8	0.2	1.67%	3.33%	0.4	11.6	212	-
Bottom shell plating	Bottom shell plating	Keel strake	12	1.2	-	220	11.8	0.2	1.67%	0%	0	12.0	186	-
Bottom shell plating	Bottom shell plating	Keel strake	12	1.2	-	221	11.9	0.1	0.83%	4.17%	0.5	11.5	210	-
Hopper tank	Side plating	-	10	1	-	277	9.7	0.3	3%	1%	0.1	9.9	264	-
Hopper tank	Side plating	-	10	1	-	278	9.9	0.1	1%	2%	0.2	9.8	265	-
Hopper tank	Side plating	-	10	1	-	279	9.7	0.3	3%	8%	0.8	9.2	266	-
Hopper tank	Side plating	-	10	1	-	280	9.9	0.1	1%	5%	0.5	9.5	267	-

Substantial diminution

Excessive diminution

TM Repaired

Transverse: Amidship

Hull item	Sub hull item	Longitudinal Location	Orig. thk mm	Max Dim mm	Port					Starboard				
					Space / Room	Id	TM mm	Diminution		Diminution		TM mm	Id	Space / Room
								mm	%	%	mm			
Hopper tank	Bottom plating	-	12	0.6	-	272	10.9	1.1	9.17%	7.5%	0.9	11.1	268	-
Hopper tank	Bottom plating	-	12	0.6	-	273	11.4	0.6	5%	4.17%	0.5	11.5	269	-
Hopper tank	Bottom plating	-	12	0.6	-	274	11.6	0.4	3.33%	10%	1.2	10.8	270	-
Hopper tank	Bottom plating	-	12	0.6	-	275	11.5	0.5	4.17%	12.5%	1.5	10.5	271	-
Hopper tank	Bottom plating	-	12	0.6	-	276	11.8	0.2	1.67%					
Main deck	Plating A3	Sheer strake	10	1						2%	0.2	9.8	0	-
Main deck	Plating A3	Sheer strake	10	1						2%	0.2	9.8	1	-
Main deck	Plating C3	Sheer strake	10	1	-	28	9.1	0.9	9%					
Main deck	Plating C3	Sheer strake	10	1	-	29	9.0	1	10%					

Substantial diminution

Excessive diminution

TM Repaired

Transverse: Transverse loc. 1

Hull item	Sub hull item	Longitudinal Location	Orig. thk mm	Max Dim mm	Port					Starboard				
					Space / Room	Id	TM mm	Diminution		Diminution		TM mm	Id	Space / Room
								mm	%	%	mm			
Main deck	Plating C2	Sheer strake	10	1	-	63	9.5	0.5	5%					
Main deck	Plating C2	Sheer strake	10	1	-	64	9.5	0.5	5%					
Main deck	Plating A2	Sheer strake	10	1						5%	0.5	9.5	65	-
Main deck	Plating A2	Sheer strake	10	1						5%	0.5	9.5	66	-
Main deck	Plating C4	Sheer strake	10	1	-	67	9.5	0.5	5%					
Main deck	Plating C4	Sheer strake	10	1	-	68	9.7	0.3	3%					
Main deck	Plating A4	Sheer strake	10	1	-	69	9.7	0.3	3%					
Main deck	Plating A4	Sheer strake	10	1	-	70	9.7	0.3	3%					

Substantial diminution

Excessive diminution

TM Repaired

Transverse: Transverse loc. 2 - Transverse loc. 3

Hull item	Sub hull item	Longitudinal Location	Orig. thk mm	Max Dim mm	Transverse loc. 2										Transverse loc. 3							
					Port					Starboard					Port				Starboard			
					Space / Room	Id	TM	Diminution	Diminution	TM	Id	Space / Room	Space / Room	Id	TM	Diminution	Diminution	TM	Id	Space / Room		
							mm	mm	%	%	mm	mm			mm	mm	%	%	mm	mm		
Main deck	Plating A6	2nd strake inboard	10	1														4%	0.4	9.6	60	Aftpeak

Substantial diminution

Excessive diminution

TM Repaired

Longitudinal: Centre strake

Hull item	Sub hull item	Transverse Location	Orig. thk mm	Max Dim mm	Port					Starboard				
					Space / Room	Id	TM mm	Diminution		Diminution		TM mm	Id	Space / Room
								mm	%	%	mm			
Main deck	Plating B2	Transverse loc. 2	10	1	-	21	9.5	0.5	5%	6%	0.6	9.4	9	-
Main deck	Plating B1	Transverse loc. 3	10	1	Forepeak	15	9.4	0.6	6%	9%	0.9	9.1	12	Forepeak
Main deck	Plating B1	Transverse loc. 3	10	1	Forepeak	16	9.5	0.5	5%	-20%	-2	12	13	Forepeak
Main deck	Plating B3	Transverse loc. 2	10	1	-	45	9.4	0.6	6%	6%	0.6	9.4	44	-
Main deck	Plating B3	Transverse loc. 3	10	1	Aftpeak	50	9.3	0.7	7%	6%	0.6	9.4	51	Aftpeak
Main deck	Plating B3	Transverse loc. 3	10	1	Aftpeak	58	9.8	0.2	2%	2%	0.2	9.8	59	Aftpeak

Substantial diminution

Excessive diminution

TM Repaired

Longitudinal: Sheer strake

Hull item	Sub hull item	Transverse Location	Orig. thk mm	Max Dim mm	Port					Starboard				
					Space / Room	Id	TM mm	Diminution		Diminution		TM mm	Id	Space / Room
								mm	%	%	mm			
Side shell plating	Side shell plating	2nd Aft	12	1.8						9.17%	1.1	10.9	122	-
Bilge plating	Bilge plating	3rd FWD	10	1.5	-	130	8.6	1.4	14%					
Main deck	Plating A3	Amidship	10	1						2%	0.2	9.8	0	-
Main deck	Plating A3	Amidship	10	1						2%	0.2	9.8	1	-
Main deck	Plating A2	1st FWD	10	1						6%	0.6	9.4	2	-
Main deck	Plating A2	1st FWD	10	1						8%	0.8	9.2	3	-
Main deck	Plating A2	2nd FWD	10	1						9%	0.9	9.1	4	-
Main deck	Plating A2	2nd FWD	10	1						12%	1.2	8.8	5	-
Main deck	Plating A2	Transverse loc. 1	10	1						5%	0.5	9.5	65	-
Main deck	Plating A2	Transverse loc. 1	10	1						5%	0.5	9.5	66	-
Main deck	Plating A1	3rd FWD	10	1						9%	0.9	9.1	6	Forepeak
Main deck	Plating C1	3rd FWD	10	1	Forepeak	20	9.4	0.6	6%					
Main deck	Plating C2	2nd FWD	10	1	-	24	9.2	0.8	8%					
Main deck	Plating C2	2nd FWD	10	1	-	25	8.7	1.3	13%					

Substantial diminution

Excessive diminution

TM Repaired

Longitudinal: Sheer strake

Hull item	Sub hull item	Transverse Location	Orig. thk mm	Max Dim mm	Port					Starboard				
					Space / Room	Id	TM mm	Diminution		Diminution		TM mm	Id	Space / Room
								mm	%	%	mm			
Main deck	Plating C2	1st FWD	10	1	-	26	9.4	0.6	6%					
Main deck	Plating C2	1st FWD	10	1	-	27	9.5	0.5	5%					
Main deck	Plating C2	Transverse loc. 1	10	1	-	63	9.5	0.5	5%					
Main deck	Plating C2	Transverse loc. 1	10	1	-	64	9.5	0.5	5%					
Main deck	Plating C3	Amidship	10	1	-	28	9.1	0.9	9%					
Main deck	Plating C3	Amidship	10	1	-	29	9.0	1	10%					
Main deck	Plating C4	1st Aft	10	1	-	30	9.3	0.7	7%					
Main deck	Plating C4	1st Aft	10	1	-	31	9.5	0.5	5%					
Main deck	Plating C4	Transverse loc. 1	10	1	-	67	9.5	0.5	5%					
Main deck	Plating C4	Transverse loc. 1	10	1	-	68	9.7	0.3	3%					
Main deck	Plating C5	2nd Aft	10	1	-	32	9.5	0.5	5%					
Main deck	Plating C5	2nd Aft	10	1	-	34	9.4	0.6	6%					
Main deck	Plating C6	3rd Aft	10	1	Aftpeak	33	9.2	0.8	8%					
Main deck	Plating C6	3rd Aft	10	1	Aftpeak	39	9.2	0.8	8%					

Substantial diminution

Excessive diminution

TM Repaired

Longitudinal: Sheer strake

Hull item	Sub hull item	Transverse Location	Orig. thk mm	Max Dim mm	Port					Starboard				
					Space / Room	Id	TM mm	Diminution		Diminution		TM mm	Id	Space / Room
								mm	%	%	mm			
Main deck	Plating C6	3rd Aft	10	1	Aftpeak	54	9.8	0.2	2%					
Main deck	Plating C6	3rd Aft	10	1	Aftpeak	55	9.9	0.1	1%					
Main deck	Plating A5	2nd Aft	10	1						8%	0.8	9.2	36	-
Main deck	Plating A5	2nd Aft	10	1						8%	0.8	9.2	37	-
Main deck	Plating A6	3rd Aft	10	1	Forepeak	38	9.4	0.6	6%	4%	0.4	9.6	62	Aftpeak
Main deck	Plating A4	1st Aft	10	1	-	40	9.5	0.5	5%					
Main deck	Plating A4	1st Aft	10	1	-	41	9.4	0.6	6%					
Main deck	Plating A4	Transverse loc. 1	10	1	-	69	9.7	0.3	3%					
Main deck	Plating A4	Transverse loc. 1	10	1	-	70	9.7	0.3	3%					

Substantial diminution

Excessive diminution

TM Repaired

Longitudinal: 1st below sheer strake - 2nd below sheer strake

Hull item	Sub hull item	Transverse Location	Orig. thk mm	Max Dim mm	1st below sheer strake										2nd below sheer strake									
					Port					Starboard					Port					Starboard				
					Space / Room	Id	TM		Diminution %	Diminution		TM	Id	Space / Room	Space / Room	Id	TM		Diminution %	Diminution		TM	Id	Space / Room
							mm	mm		%	mm						mm	mm		mm	mm			
Side shell plating	Side shell plating	3rd Aft	10	1.5	-	123	9.8	0.2	2%	5%	0.5	9.5	71	-	-	163	9.5	0.5	5%	4%	0.4	9.6	93	Aftpeak
Side shell plating	Side shell plating	3rd Aft	10	1.5	-	164	9.5	0.5	5%	14%	1.4	8.6	72	-	-	165	9.4	0.6	6%	4%	0.4	9.6	94	Aftpeak
Side shell plating	Side shell plating	3rd Aft	10	1.5	Aftpeak	166	9.6	0.4	4%	5%	0.5	9.5	91	Aftpeak	Aftpeak	167	9.4	0.6	6%	6%	0.6	9.4	95	-
Side shell plating	Side shell plating	3rd Aft	10	1.5	Aftpeak	168	8.9	1.1	11%	4%	0.4	9.6	92	Aftpeak	-	169	9.2	0.8	8%	4%	0.4	9.6	96	-
Side shell plating	Side shell plating	2nd Aft	10	1.5	-	124	9.9	0.1	1%	18%	1.8	8.2	73	-	-	160	9.2	0.8	8%	12%	1.2	8.8	98	-
Side shell plating	Side shell plating	2nd Aft	10	1.5	-	162	9.6	0.4	4%	20%	2	8.0	74	-	-	161	9.7	0.3	3%	18%	1.8	8.2	99	-
Side shell plating	Side shell plating	2nd Aft	10	1.5						15%	1.5	8.5	79	-					15%	1.5	8.5	100	-	
Side shell plating	Side shell plating	2nd Aft	12	1.8										-	171	11.5	0.5	4.17%						
Side shell plating	Side shell plating	1st Aft	10	1.5	-	125	9.8	0.2	2%	5%	0.5	9.5	86	-	-	156	9.2	0.8	8%	5%	0.5	9.5	101	-
Side shell plating	Side shell plating	1st Aft	10	1.5	-	154	9.1	0.9	9%	11%	1.1	8.9	87	-					4%	0.4	9.6	102	-	
Side shell plating	Side shell plating	1st Aft	10	1.5	-	155	9.1	0.9	9%															
Side shell plating	Side shell plating	1st FWD	10	1.5	-	132	9.2	0.8	8%	16%	1.6	8.4	88	-	-	146	9.2	0.8	8%	4%	0.4	9.6	109	-
Side shell plating	Side shell plating	1st FWD	10	1.5	-	145	9.3	0.7	7%	8%	0.8	9.2	110	-	-	147	9.5	0.5	5%	9%	0.9	9.1	111	-
Side shell plating	Side shell plating	3rd FWD	10	1.5	-	134	9.1	0.9	9%	14%	1.4	8.6	89	-	-	126	9.4	0.6	6%	11%	1.1	8.9	90	-

Substantial diminution

Excessive diminution

TM Repaired

Longitudinal: 1st below sheer strake - 2nd below sheer strake

Hull item	Sub hull item	Transverse Location	Orig. thk mm	Max Dim mm	1st below sheer strake										2nd below sheer strake									
					Port					Starboard					Port					Starboard				
					Space / Room	Id	Diminution		TM	Space / Room	Id	Diminution		TM	Space / Room	Space / Room	Id	Diminution		Diminution	TM	Space / Room	Id	Space / Room
							mm	%				%	mm					%	mm					
Side shell plating	Side shell plating	3rd FWD	10	1.5	Forepeak	135	9.1	0.9	9%	4%	0.4	9.6	117	Forepeak	Forepeak	136	8.9	1.1	11%	5%	0.5	9.5	118	Forepeak
Side shell plating	Side shell plating	3rd FWD	10	1.5	Forepeak	137	8.4	1.6	16%	15%	1.5	8.5	120	Forepeak	Forepeak	138	8.5	1.5	15%	15%	1.5	8.5	121	Forepeak
Side shell plating	Side shell plating	Amidship	10	1.5	-	131	9.5	0.5	5%	4%	0.4	9.6	97	-	-	151	9.1	0.9	9%	4%	0.4	9.6	103	-
Side shell plating	Side shell plating	Amidship	10	1.5	-	153	9.2	0.8	8%	7%	0.7	9.3	108	-	-	152	9.1	0.9	9%	6%	0.6	9.4	107	-
Side shell plating	Side shell plating	2nd FWD	10	1.5	-	133	9.2	0.8	8%	13%	1.3	8.7	112	-	-	141	9.4	0.6	6%	8%	0.8	9.2	113	-
Side shell plating	Side shell plating	2nd FWD	10	1.5	-	140	9.2	0.8	8%	8%	0.8	9.2	114	-	-	142	9.1	0.9	9%	6%	0.6	9.4	115	-
Bilge plating	Bilge plating	3rd Aft	10	1.5											-	127	9.1	0.9	9%	5%	0.5	9.5	75	-
Bilge plating	Bilge plating	3rd Aft	10	1.5											-	170	9.3	0.7	7%	8%	0.8	9.2	76	-
Bilge plating	Bilge plating	2nd Aft	10	1.5											-	128	9.4	0.6	6%	5%	0.5	9.5	77	-
Bilge plating	Bilge plating	2nd Aft	10	1.5											-	159	9.1	0.9	9%	13%	1.3	8.7	78	-
Bilge plating	Bilge plating	2nd Aft	10	1.5															14%	1.4	8.6	80	-	
Bilge plating	Bilge plating	1st Aft	10	1.5											-	157	9.1	0.9	9%	5%	0.5	9.5	81	-
Bilge plating	Bilge plating	1st Aft	10	1.5											-	158	8.2	1.8	18%	10%	1	9.0	83	-
Bilge plating	Bilge plating	1st FWD	10	1.5											-	148	9.5	0.5	5%	9%	0.9	9.1	82	-

Substantial diminution

Excessive diminution

TM Repaired

Room and space: Aftpeak

Hull item	Sub hull item	Transverse Location	Longitudinal Location	Orig. thk mm	Max Dim mm	Port					Starboard				
						Space / Room	Id	TM mm	Diminution		Diminution		TM mm	Id	Space / Room
									mm	%	%	mm			
Side shell plating	Side shell plating	3rd Aft	1st below sheer strake	10	1.5	Aftpeak	166	9.6	0.4	4%	5%	0.5	9.5	91	Aftpeak
Side shell plating	Side shell plating	3rd Aft	1st below sheer strake	10	1.5	Aftpeak	168	8.9	1.1	11%	4%	0.4	9.6	92	Aftpeak
Side shell plating	Side shell plating	3rd Aft	2nd below sheer strake	10	1.5	Aftpeak	167	9.4	0.6	6%	4%	0.4	9.6	93	Aftpeak
Side shell plating	Side shell plating	3rd Aft	2nd below sheer strake	10	1.5						4%	0.4	9.6	94	Aftpeak
Bottom shell plating	Bottom shell plating	3rd Aft	3rd below sheer strake	12	1.2	Aftpeak	177	11.5	0.5	4.17%	3.33%	0.4	11.6	238	Aftpeak
Bottom shell plating	Bottom shell plating	3rd Aft	3rd below sheer strake	12	1.2	Aftpeak	231	11.8	0.2	1.67%	2.5%	0.3	11.7	239	Aftpeak
Bottom shell plating	Bottom shell plating	3rd Aft	Keel strake	12	1.2	Aftpeak	232	11.5	0.5	4.17%	5%	0.6	11.4	183	Aftpeak
Bottom shell plating	Bottom shell plating	3rd Aft	Keel strake	12	1.2	Aftpeak	233	11.2	0.8	6.67%	5%	0.6	11.4	237	Aftpeak
Main deck	Plating C6	3rd Aft	Sheer strake	10	1	Aftpeak	33	9.2	0.8	8%					
Main deck	Plating C6	3rd Aft	Sheer strake	10	1	Aftpeak	39	9.2	0.8	8%					
Main deck	Plating C6	3rd Aft	Sheer strake	10	1	Aftpeak	54	9.8	0.2	2%					
Main deck	Plating C6	3rd Aft	Sheer strake	10	1	Aftpeak	55	9.9	0.1	1%					
Main deck	Plating C6	3rd Aft	1st below sheer strake	10	1	Aftpeak	35	9.0	1	10%					
Main deck	Plating C6	3rd Aft	1st strake inboard	10	1	Aftpeak	48	9.6	0.4	4%					

Substantial diminution

Excessive diminution

TM Repaired

Room and space: Aftpeak

Hull item	Sub hull item	Transverse Location	Longitudinal Location	Orig. thk mm	Max Dim mm	Port					Starboard				
						Space / Room	Id	TM mm	Diminution		Diminution		TM mm	Id	Space / Room
									mm	%	%	mm			
Main deck	Plating C6	3rd Aft	1st strake inboard	10	1	Aftpeak	56	9.8	0.2	2%					
Main deck	Plating C6	Transverse loc. 3	2nd strake inboard	10	1	Aftpeak	49	9.5	0.5	5%					
Main deck	Plating C6	Transverse loc. 3	2nd strake inboard	10	1	Aftpeak	57	9.6	0.4	4%					
Main deck	Plating B3	Transverse loc. 3	Centre strake	10	1	Aftpeak	50	9.3	0.7	7%	6%	0.6	9.4	51	Aftpeak
Main deck	Plating B3	Transverse loc. 3	Centre strake	10	1	Aftpeak	58	9.8	0.2	2%	2%	0.2	9.8	59	Aftpeak
Main deck	Plating A6	Transverse loc. 3	2nd strake inboard	10	1						6%	0.6	9.4	52	Aftpeak
Main deck	Plating A6	Transverse loc. 3	2nd strake inboard	10	1						4%	0.4	9.6	60	Aftpeak
Main deck	Plating A6	3rd Aft	1st strake inboard	10	1						5%	0.5	9.5	53	Aftpeak
Main deck	Plating A6	3rd Aft	1st strake inboard	10	1						6%	0.6	9.4	61	Aftpeak
Main deck	Plating A6	3rd Aft	Sheer strake	10	1						4%	0.4	9.6	62	Aftpeak

 Substantial diminution

 Excessive diminution

 TM Repaired

Room and space: Forepeak

Hull item	Sub hull item	Transverse Location	Longitudinal Location	Orig. thk mm	Max Dim mm	Port					Starboard				
						Space / Room	Id	TM mm	Diminution		Diminution		TM mm	Id	Space / Room
									mm	%	%	mm			
Side shell plating	Side shell plating	3rd FWD	1st below sheer strake	10	1.5	Forepeak	135	9.1	0.9	9%	4%	0.4	9.6	117	Forepeak
Side shell plating	Side shell plating	3rd FWD	1st below sheer strake	10	1.5	Forepeak	137	8.4	1.6	16%	15%	1.5	8.5	120	Forepeak
Side shell plating	Side shell plating	3rd FWD	2nd below sheer strake	10	1.5	Forepeak	136	8.9	1.1	11%	5%	0.5	9.5	118	Forepeak
Side shell plating	Side shell plating	3rd FWD	2nd below sheer strake	10	1.5	Forepeak	138	8.5	1.5	15%	15%	1.5	8.5	121	Forepeak
Bilge plating	Bilge plating	3rd FWD	2nd below sheer strake	10	1.5	Forepeak	139	9.1	0.9	9%					
Bottom shell plating	Bottom shell plating	3rd FWD	Keel strake	12	1.2	Forepeak	191	11.2	0.8	6.67%	5%	0.6	11.4	188	Forepeak
Bottom shell plating	Bottom shell plating	3rd FWD	Keel strake	12	1.2						3.33%	0.4	11.6	198	Forepeak
Bottom shell plating	Bottom shell plating	3rd FWD	3rd below sheer strake	12	1.2	Forepeak	190	11.0	1	8.33%	1.67%	0.2	11.8	199	Forepeak
Main deck	Plating A1	3rd FWD	Sheer strake	10	1						9%	0.9	9.1	6	Forepeak
Main deck	Plating A1	3rd FWD	1st strake inboard	10	1						2%	0.2	9.8	10	Forepeak
Main deck	Plating A1	3rd FWD	2nd strake inboard	10	1						12%	1.2	8.8	14	Forepeak
Main deck	Plating B1	Transverse loc. 3	2nd strake inboard	10	1						8%	0.8	9.2	11	Forepeak
Main deck	Plating B1	Transverse loc. 3	Centre strake	10	1	Forepeak	15	9.4	0.6	6%	9%	0.9	9.1	12	Forepeak
Main deck	Plating B1	Transverse loc. 3	Centre strake	10	1	Forepeak	16	9.5	0.5	5%	-20%	-2	12	13	Forepeak

Substantial diminution

Excessive diminution

TM Repaired

Room and space: Forepeak

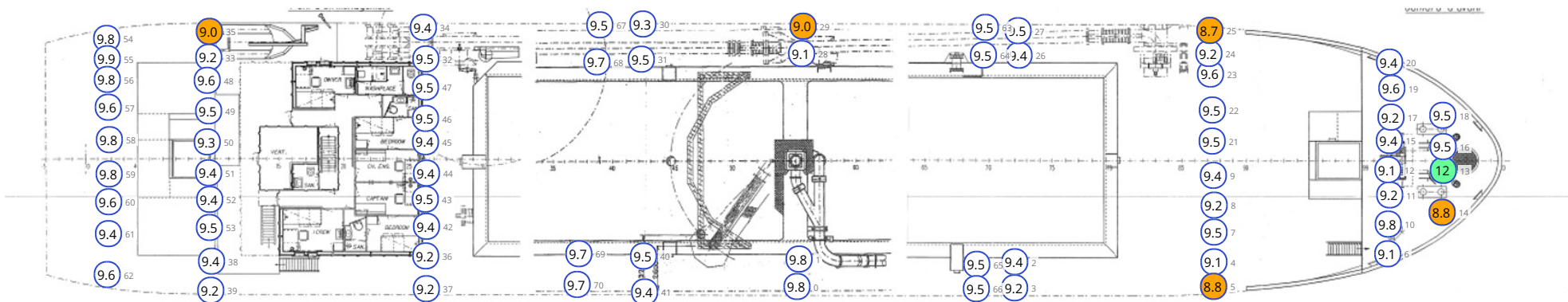
Hull item	Sub hull item	Transverse Location	Longitudinal Location	Orig. thk mm	Max Dim mm	Port					Starboard				
						Space / Room	Id	Diminution			Diminution		TM mm	Id	Space / Room
								mm	mm	%	%	mm			
Main deck	Plating C1	Transverse loc. 3	2nd strake inboard	10	1	Forepeak	17	9.2	0.8	8%					
Main deck	Plating C1	3rd FWD	2nd strake inboard	10	1	Forepeak	18	9.5	0.5	5%					
Main deck	Plating C1	3rd FWD	1st strake inboard	10	1	Forepeak	19	9.6	0.4	4%					
Main deck	Plating C1	3rd FWD	Sheer strake	10	1	Forepeak	20	9.4	0.6	6%					
Main deck	Plating A6	3rd Aft	Sheer strake	10	1	Forepeak	38	9.4	0.6	6%					

Substantial diminution

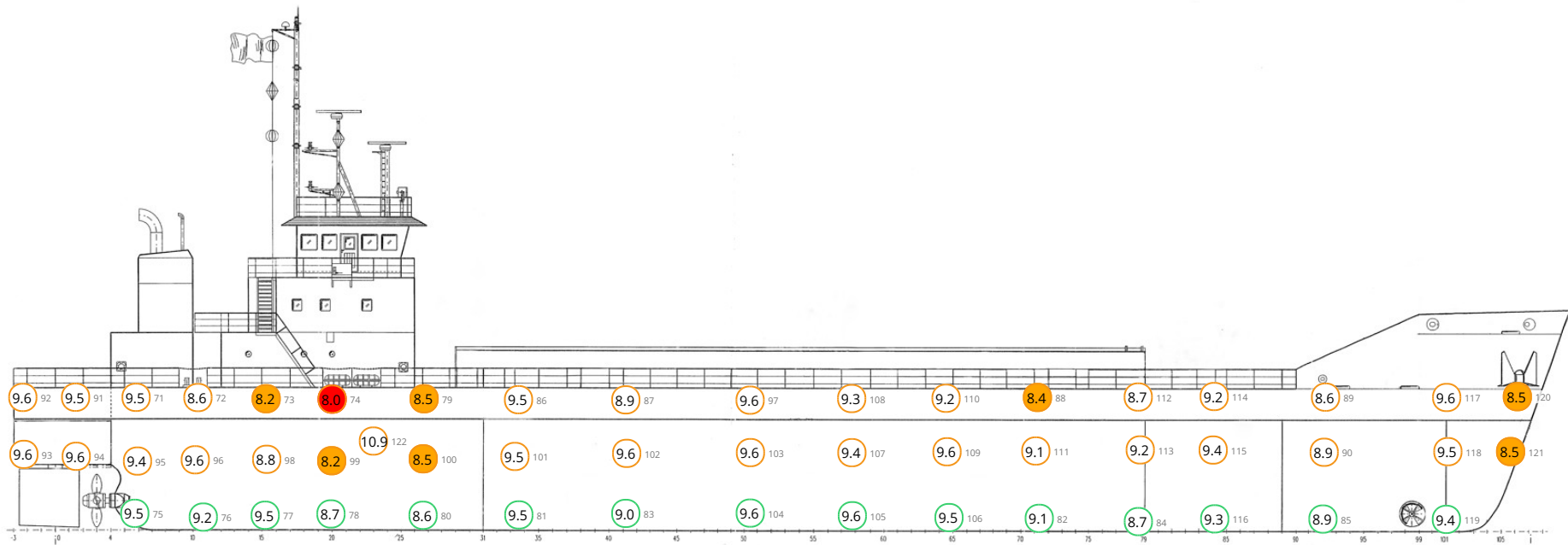
Excessive diminution

TM Repaired

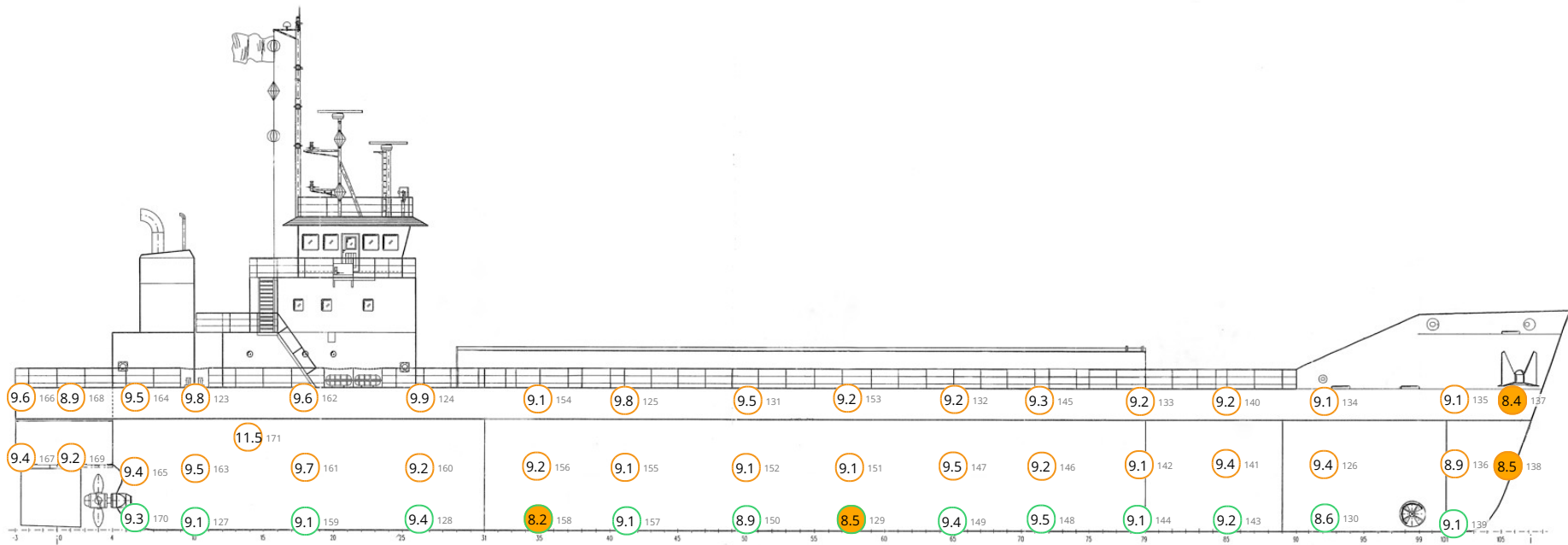
Plan: Deck plating



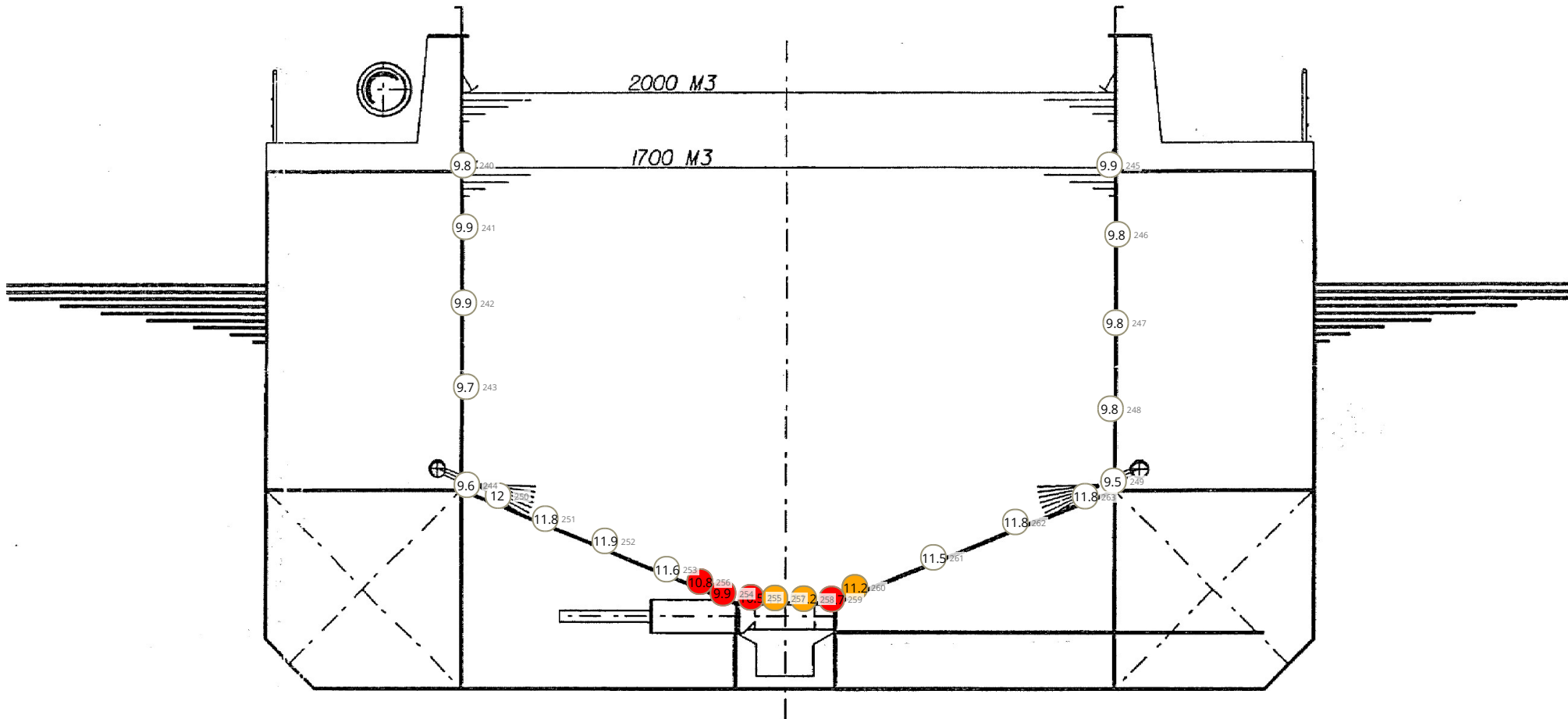
Plan: Starboard shell plating



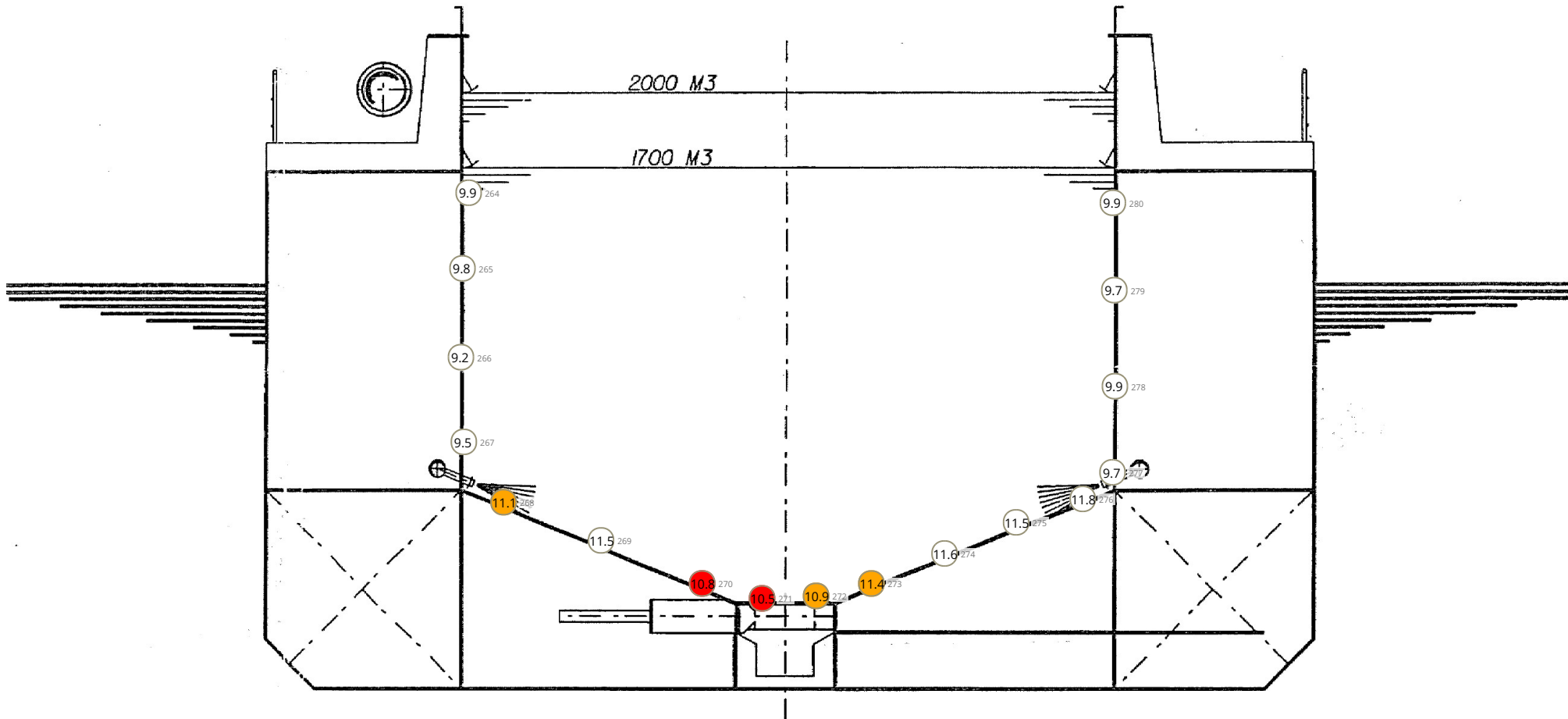
Plan: Port shell plating



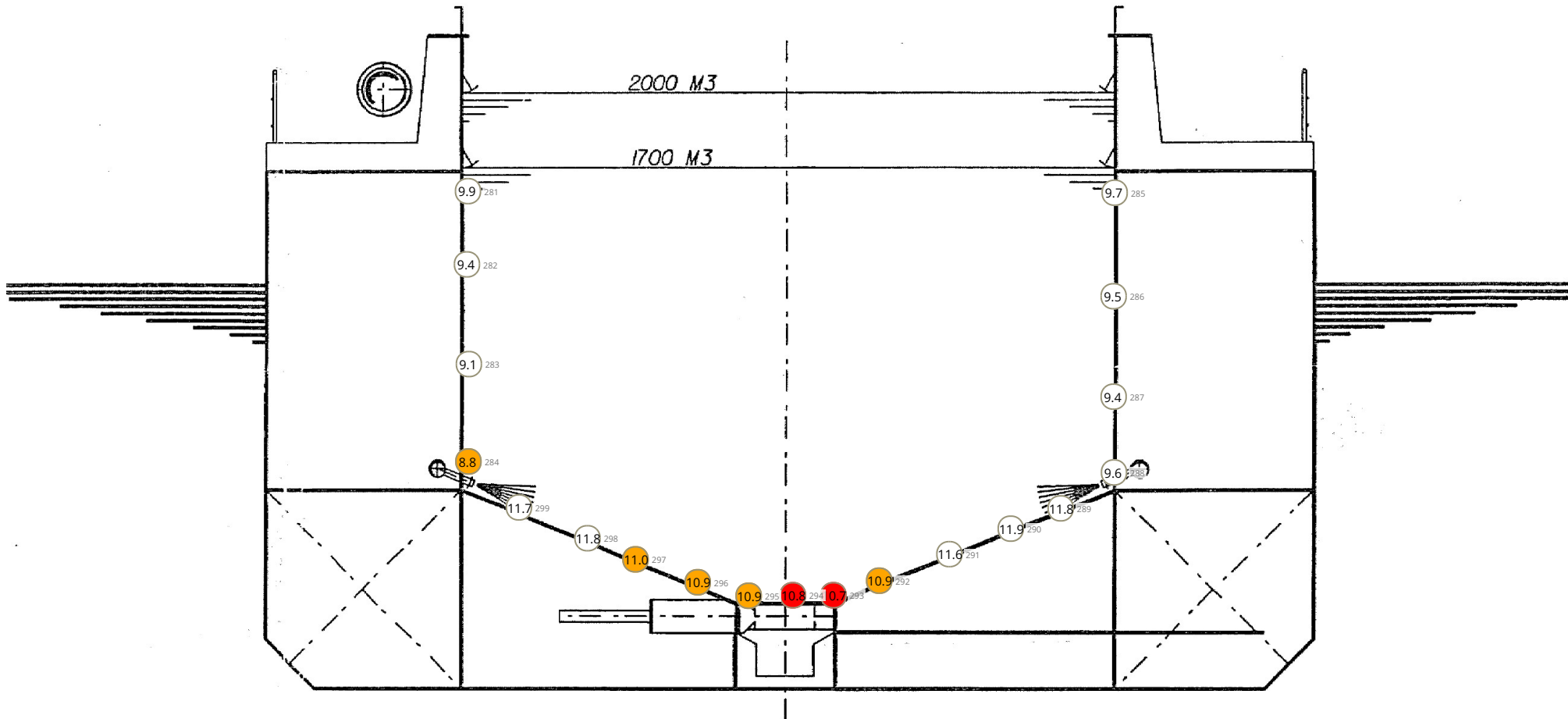
Plan: Transverse 1st FWD



Plan: Transverse amidship



Plan: Transverse 1st Aft



Caption of items gauged

 **Side shell plating**

 **Hopper tank**

Bottom plating

Side plating

 **Bilge plating**

 **Main deck**

Plating C1

Plating A1

Plating A2

Plating A3

Plating A4

Plating A5

Plating A6

Plating B1

Plating B2

Plating B3

Plating C2

Plating C3

Plating C4

Plating C5

Plating C6

 **Bottom shell plating**

Appendix

ID	Note
73	Area of corrosion
74	Area of corrosion
122	Corrosion

Appendix

